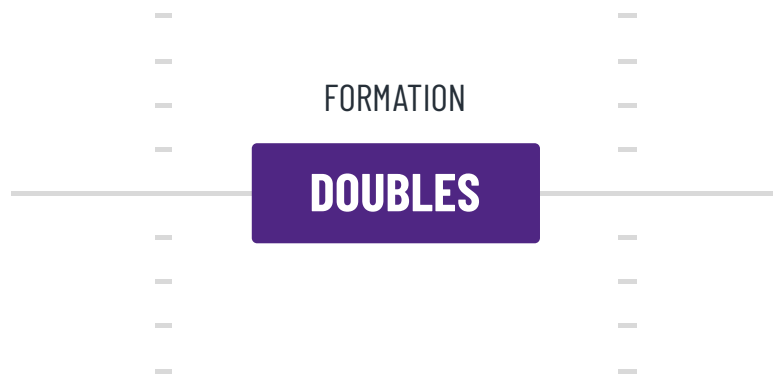
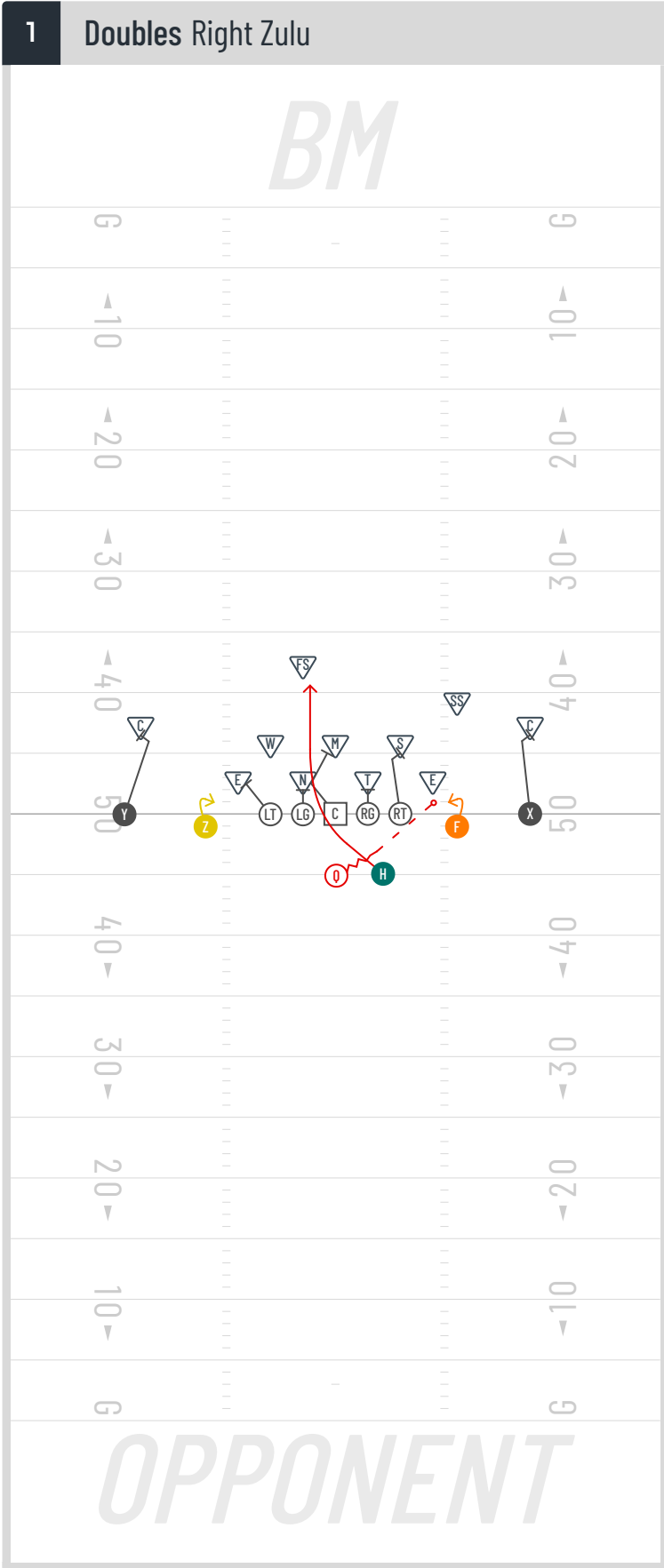


BECKOMBERGA MANIACS

OFFENSE





Q Hand Off/Pass Option

X Block CB

Z 1 Yard Hitch

F 1 Yard Hitch

H Zone Right Run Between C/RG or RG/RT

Y Block CB

RT Block Will LB

LT Block DE

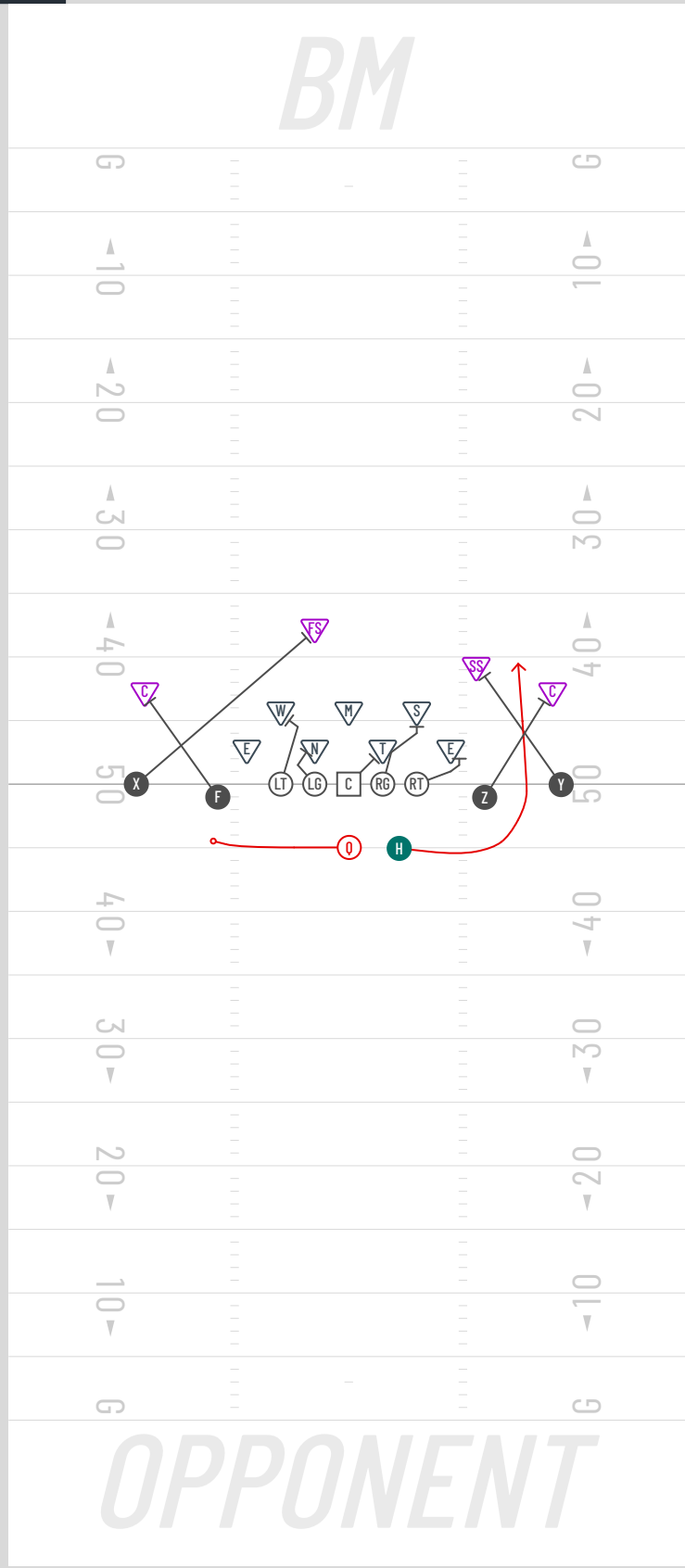
RG Block NT

LG Block DT

C Block NT - Continue to Block Mike LB

2 Doubles Right Sweep

BM



⓪ Toss to RB

ⓧ Block FS

Ⓩ Block CB

ⓕ Block CB

ⓗ Sweep Right Between Y and Z

Ⓨ Block SS

ⓇⓉ Block End

ⓁⓉ Block Will LB

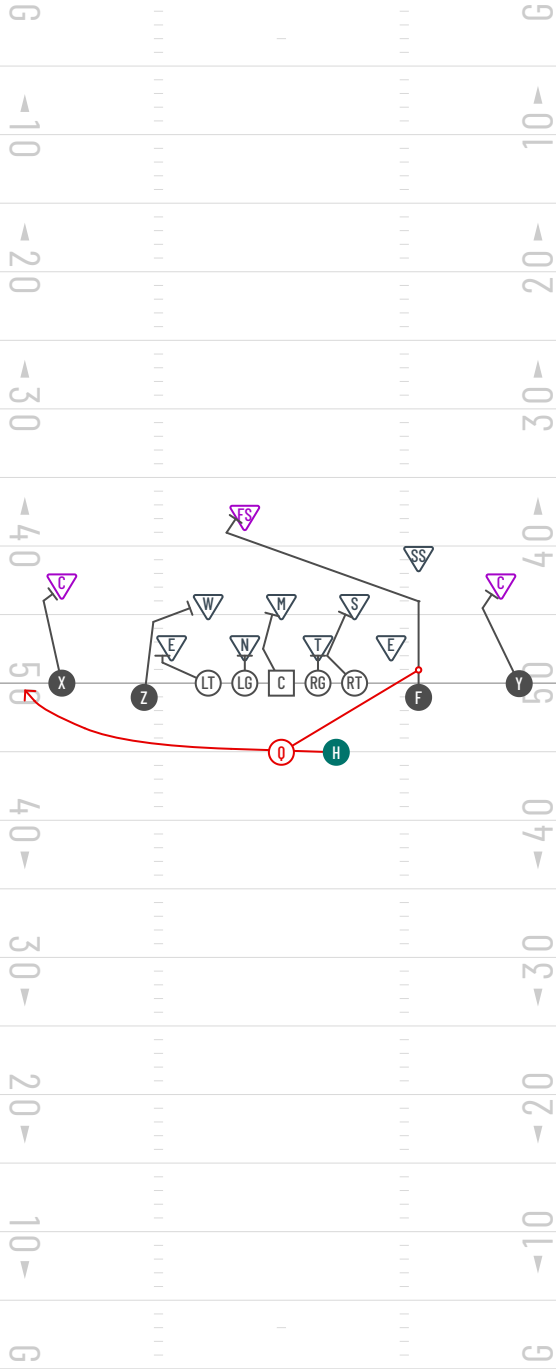
ⓇⓂ Block Sam LB

Ⓛⓖ Block NT

ⓐ Block T

3 Doubles Right Ozzy Left

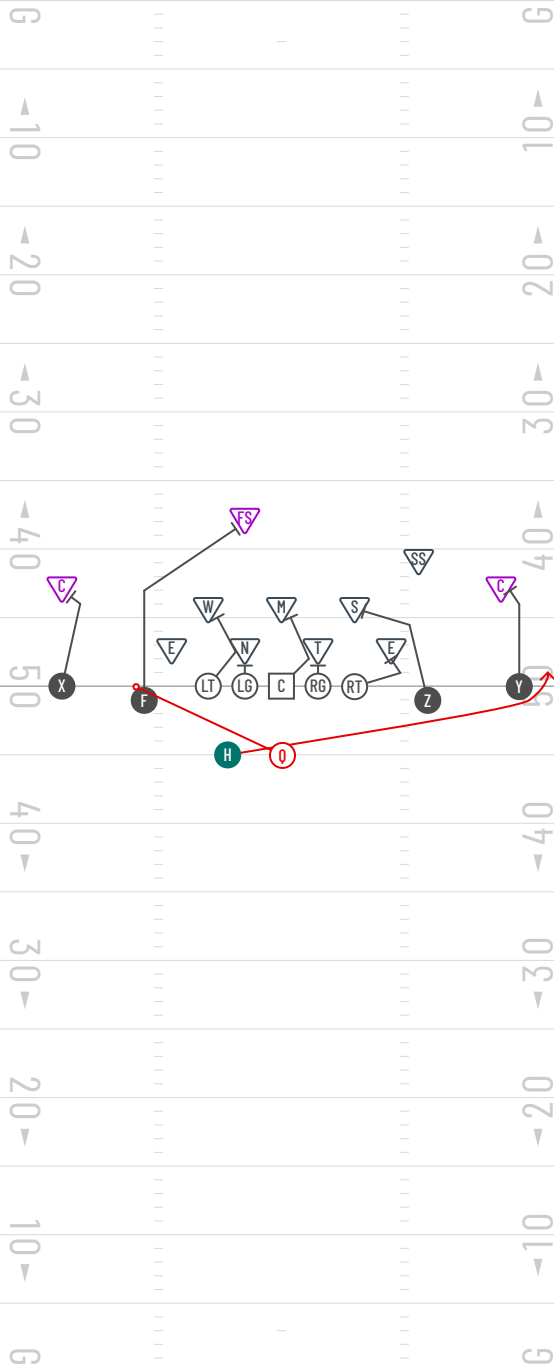
BM



OPPONENT

4 Doubles Left Ozzy Right

BM



OPPONENT

⓪ Hand Off/Keep

ⓧ Block CB

Ⓩ Block Sam LB

ⓕ Block SS

ⓗ Run Outside Zone Right

Ⓨ Block CB

ⓇⓉ Block DE

ⓁⓉ Double Team Block NT - then Block Will LB

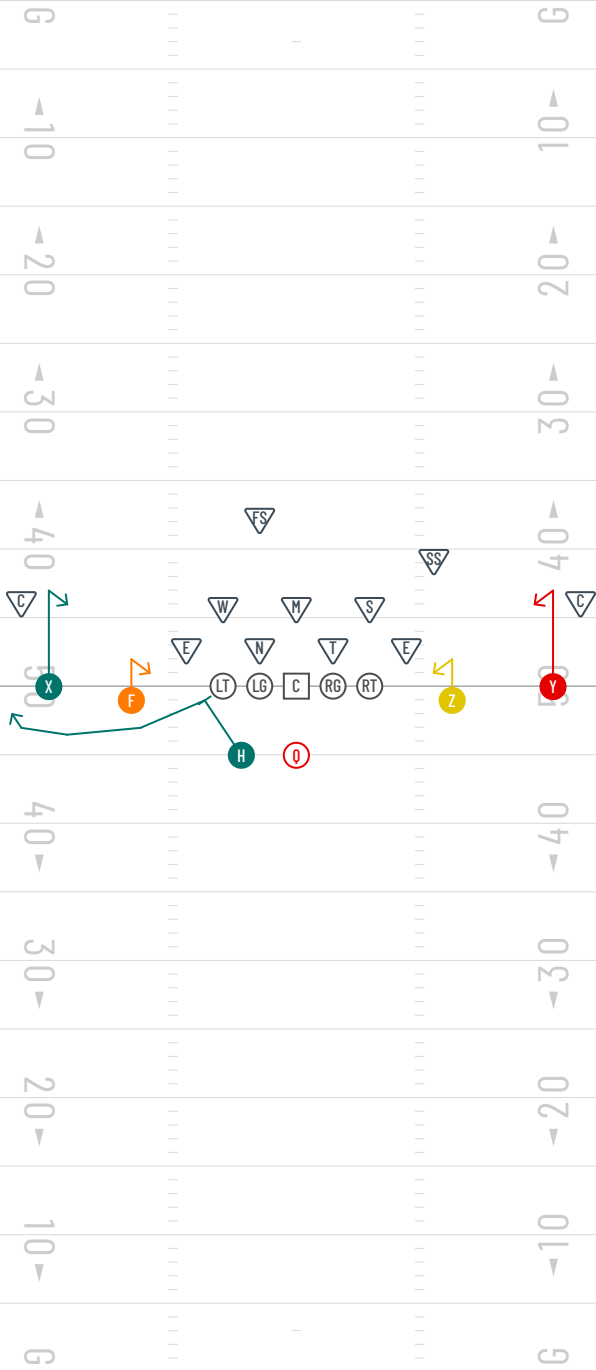
Ⓡⓖ Double Team Block DT with C - If DT closer to RG Continue Blocking

Ⓛⓖ Double Team Block NT with LT - Continue to Block NT

ⓐ Double Team Block DT with RG - if DT closer to RG, then Block Mike LB

5 Doubles HAWK

BM



Q Pass

X 5-8 Yard Hitch

Z 1-3 Yard Hitch

F 1-3 Yard Hitch

H Block First, then Swing Route

Y 5-8 Yard Hitch

RT Pass Block

LT Pass Block

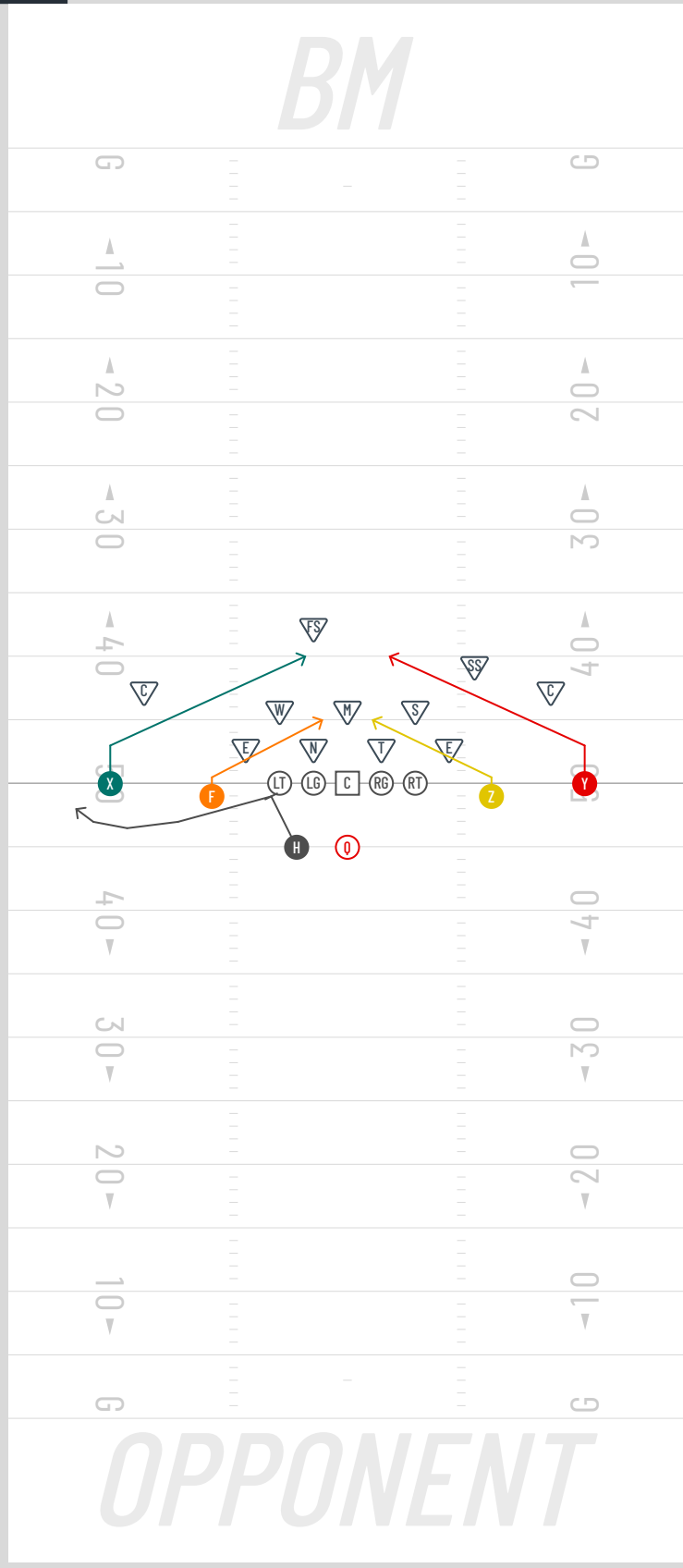
RG Pass Block

LG Pass Block

C Pass Block

6 Doubles SNAKE

BM



Q Pass

X 3 Yard Slant

Z 1 Yard Slant

F 1 Yard Slant

H Block First, then Swing Route

Y 3 Yard Slant

RT Pass Block

LT Pass Block

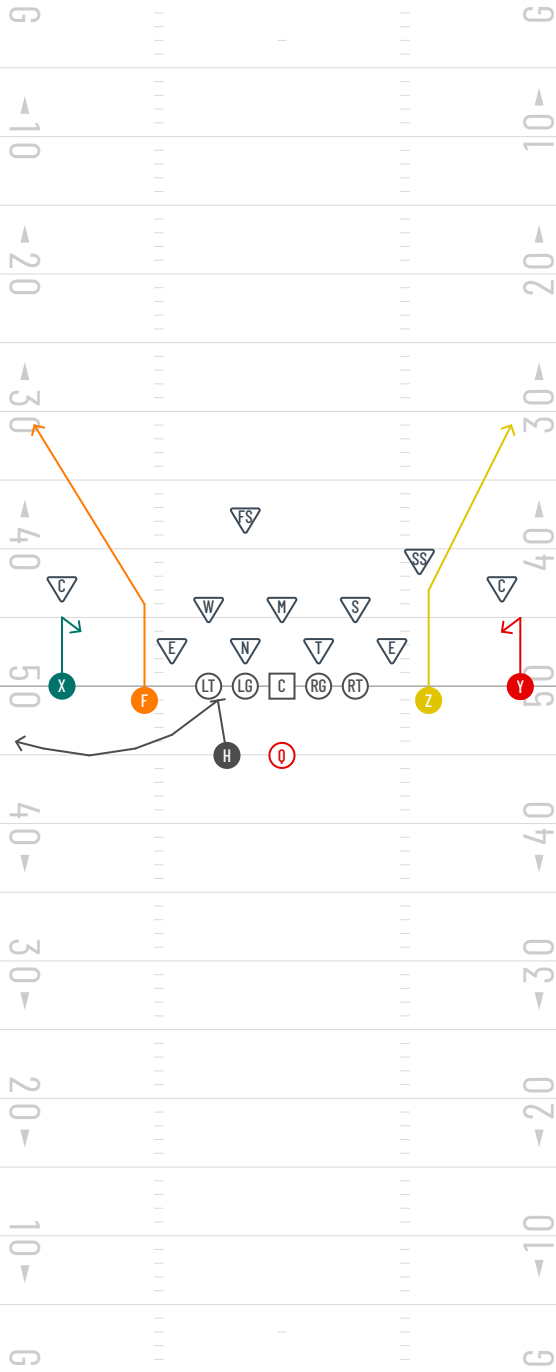
RG Pass Block

LG Pass Block

C Pass Block

9 Doubles CAT

BM



Q Pass

X 5-8 Yard Hitch

Z Corner (7 Yards to Cut)

F Corner (7 Yards to Cut)

H Block first, then Swing Route

Y 5 Yards Hitch

RT Pass Block

LT Pass Block

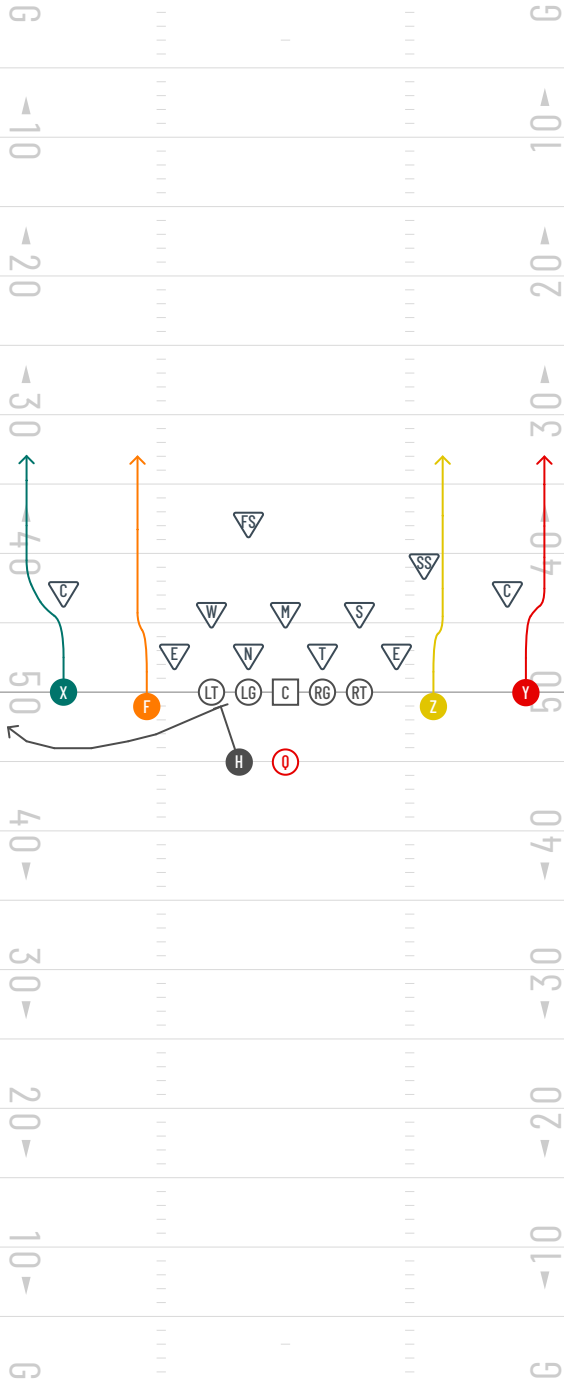
RG Pass Block

LG Pass Block

C Pass Block

10 Doubles FISH (SKY)

BM



Q Pass

X Fade

Z Fade

F Fade

H Block first, then Swing Route

Y Fade

RT Pass Block

LT Pass Block

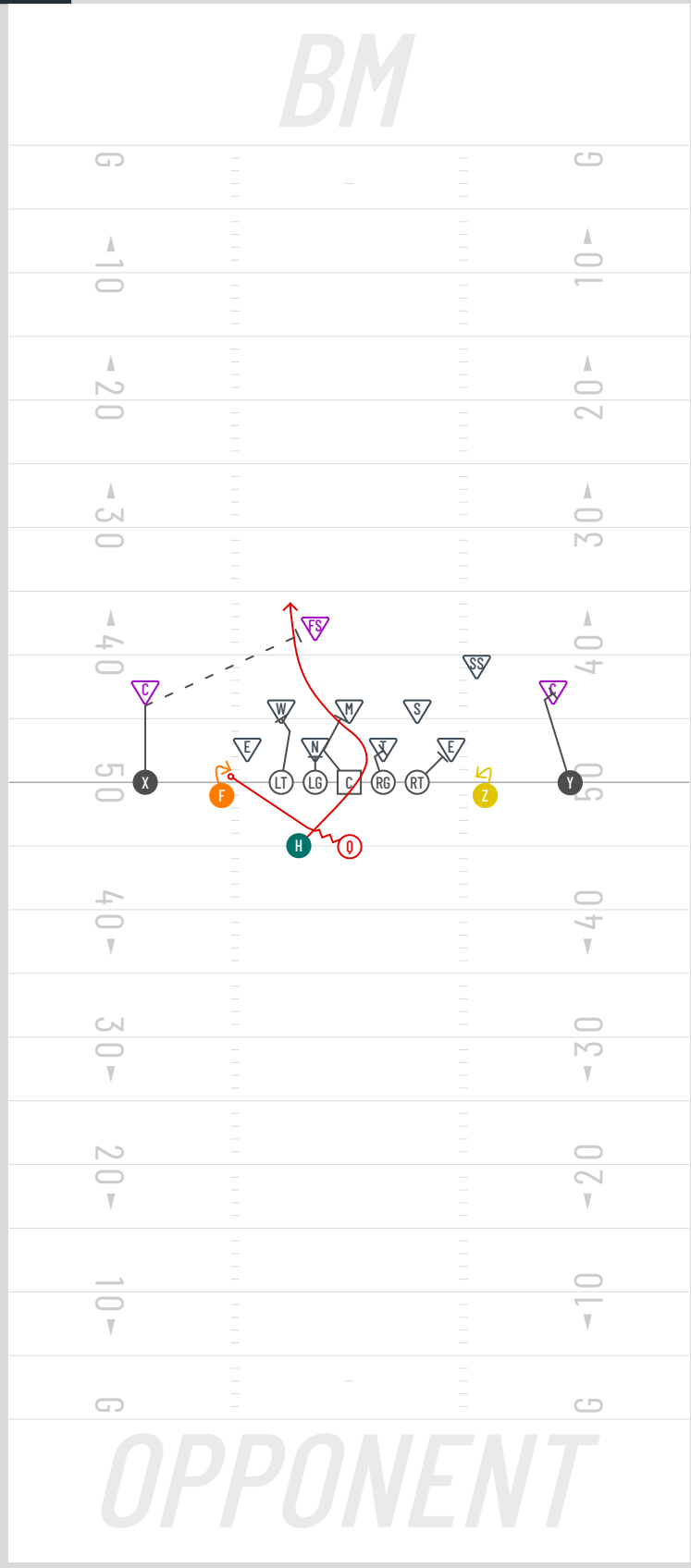
RG Pass Block

LG Pass Block

C Pass Block

11 Doubles Left Zorro

BM



Q Hand off/Pass Option

X Block CB

Z 1 Yard Hitch

F Zone Right Run Between C/RG or RG/RT

H 1 Yard Hitch

Y Block CB

RT Block DE

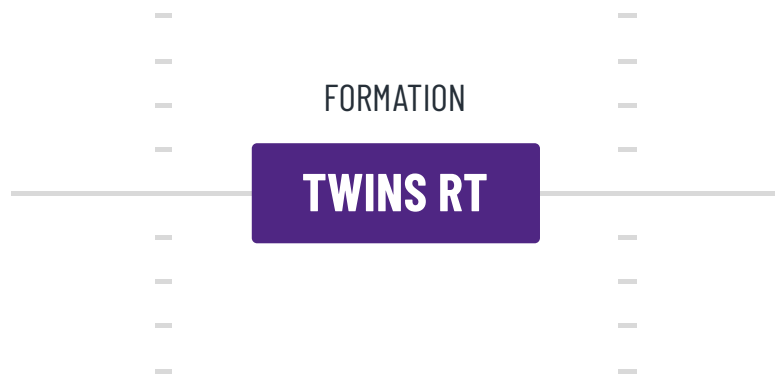
LT Block Will LB

RG Block DT

LG Block NT

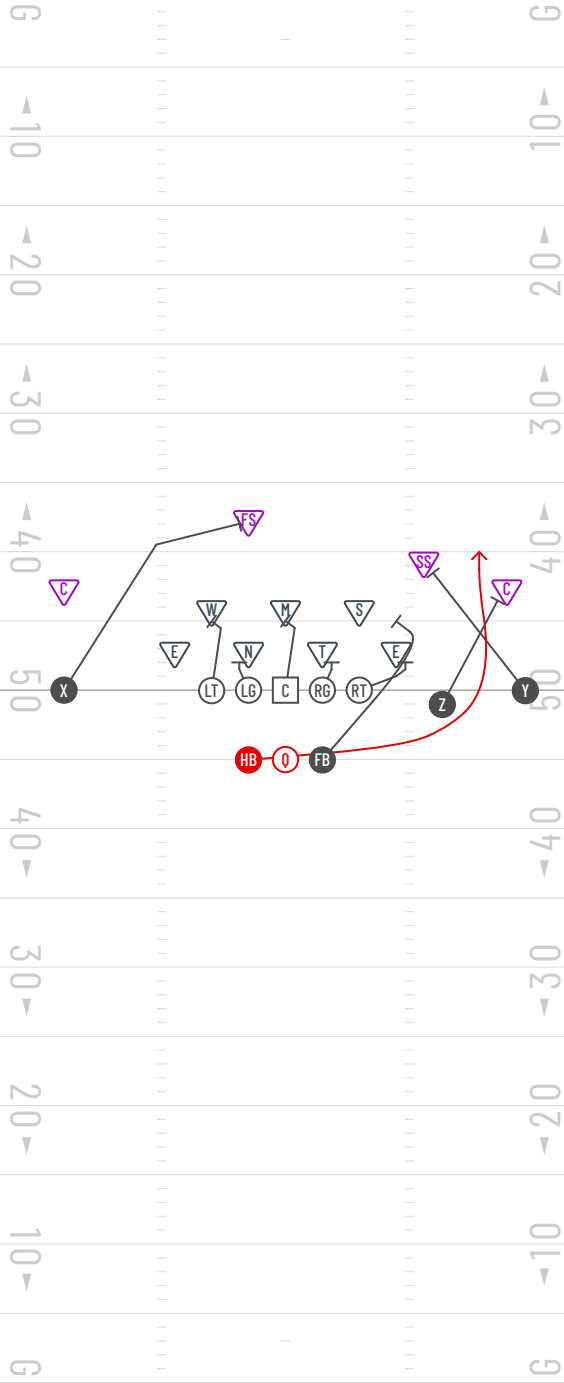
C Block NT - Continue to Block Mike LB

OPPONENT



12 Twins RT Ozzy Right

BM



○ Hand Off/Keep Option

⊗ Block CB

⊗ Block Sam LB

⊗ Run Outside Zone Right

⊗ Block SS

⊗ Block CB

⊗ Block DE

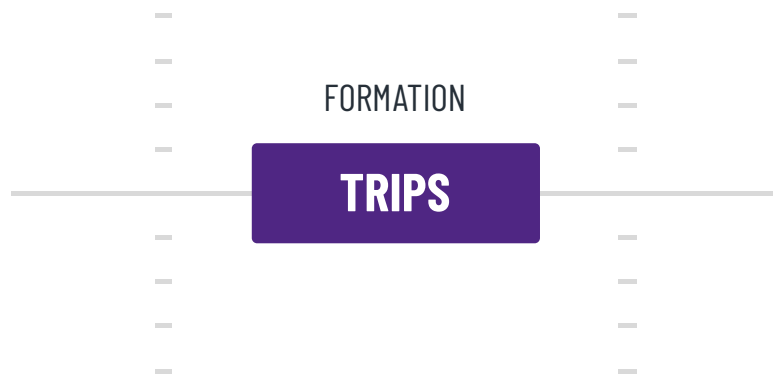
⊗ Block Will LB

⊗ Block DT

⊗ Block NT

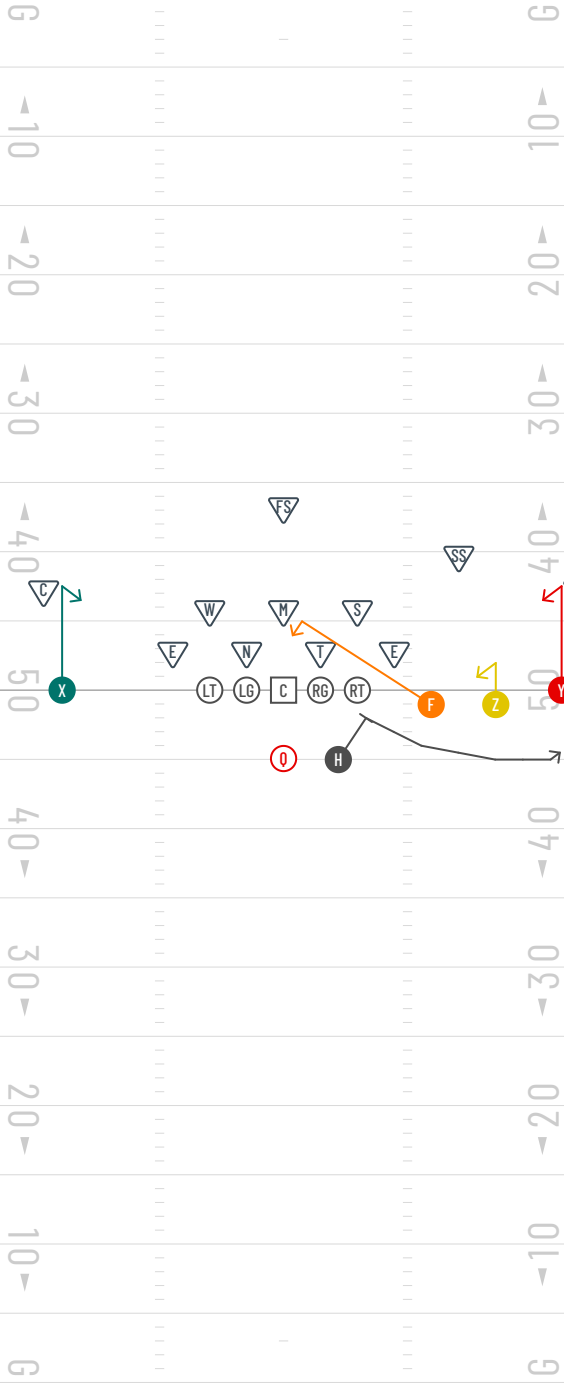
⊞ Block Mike LB

OPPONENT



13 Trips Trips RT HAWK

BM



OPPONENT

Q Pass

X 5-8 Yard Hitch

Z 3 Yard Hitch

F 5 Yard Hitch (Over the Middle)

H Block to Swing

Y 5-8 Yard Hitch

RT Pass Block

LT Pass Block

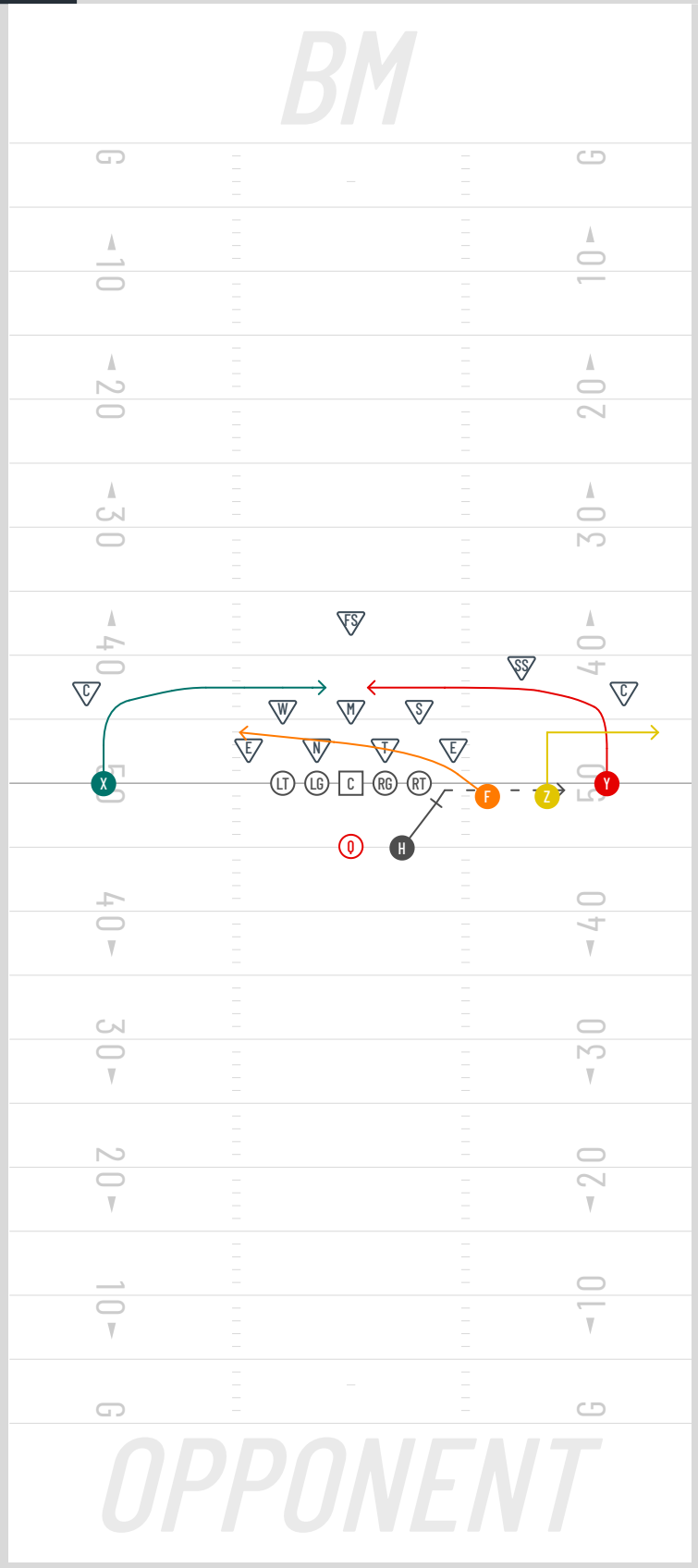
RG Pass Block

LG Pass Block

C Pass Block

14 Trips Trips RT DOG

BM



Q Pass

X 5-7 Yard Dig

Z 5 Yard Out

F Shallow Cross

H Block to Flair

Y 5-7 Yard Dig

RT Pass Block

LT Pass Block

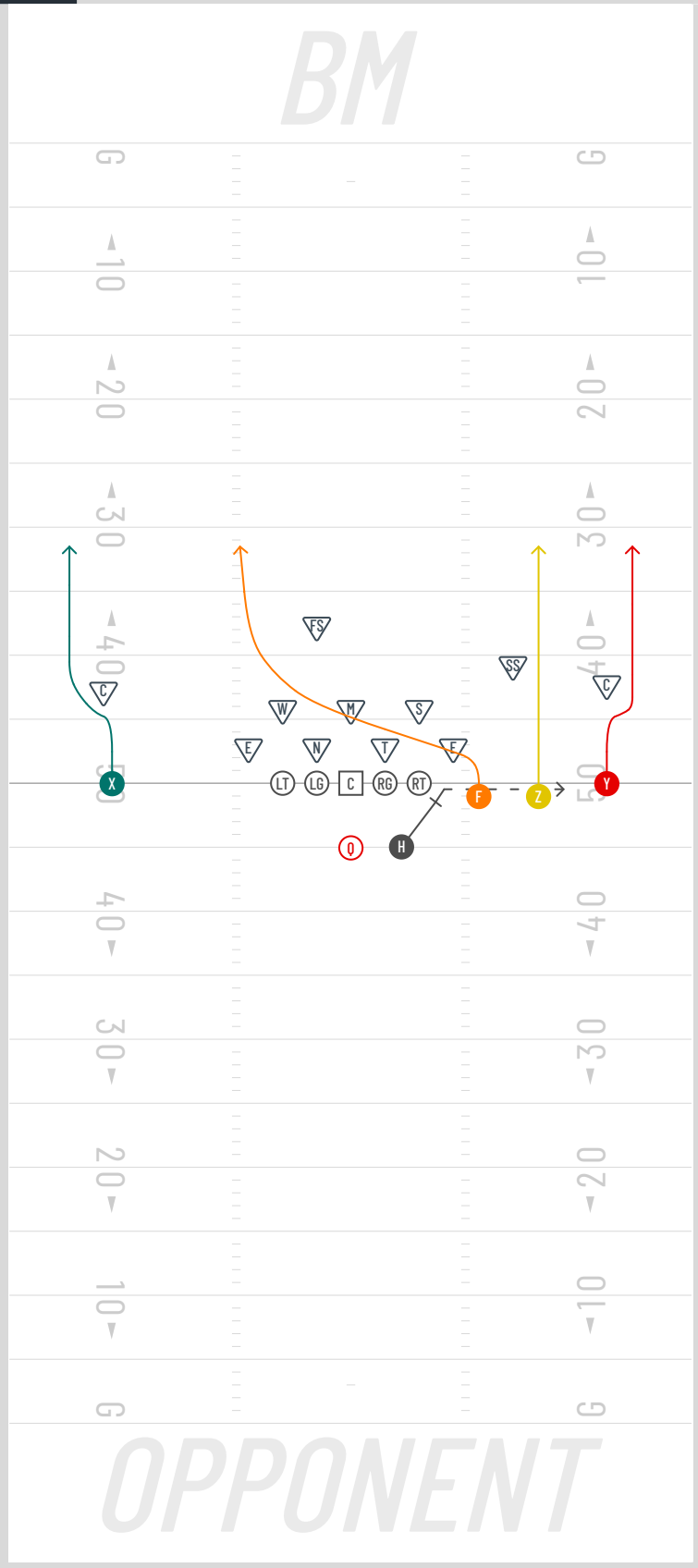
RG Pass Block

LG Pass Block

C Pass Block

15 Trips Trips RT FOX

BM



Q Pass

X Fade

Z Fade

F Fade

H Block to Flair

Y Fade

RT Pass Block

LT Pass Block

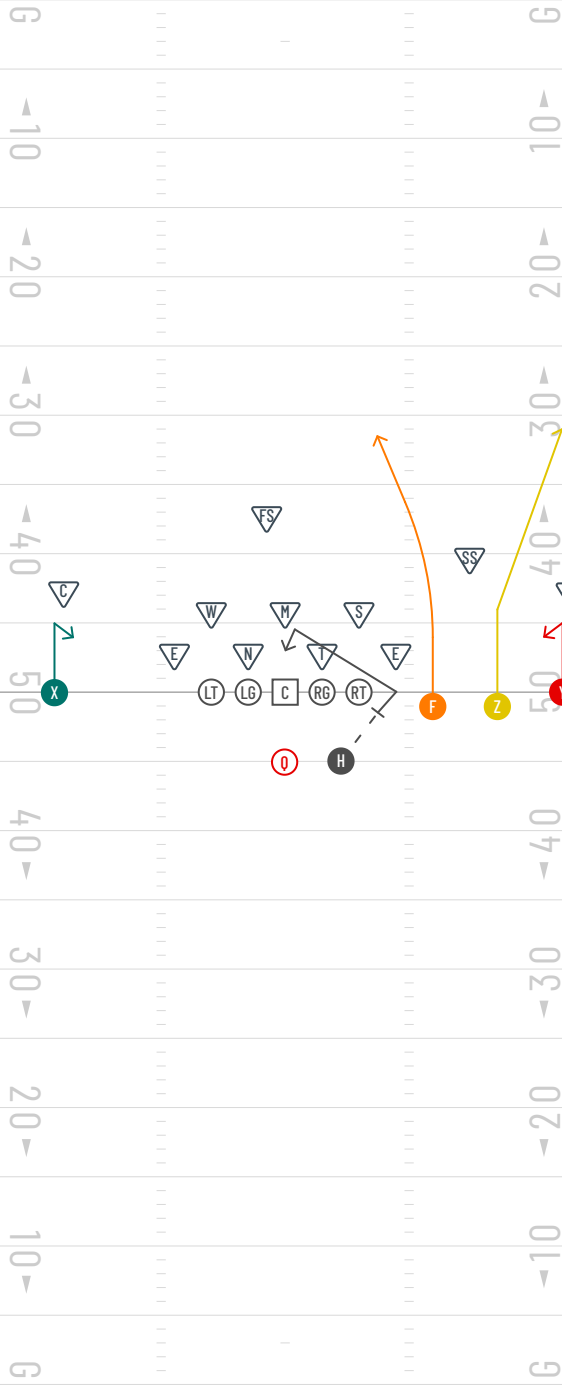
RG Pass Block

LG Pass Block

C Pass Block

16 Trips Trips RT CAT

BM



Q Pass

X 5-8 Yard Hitch

Z Corner (Cut at 7 yards)

F Skinny Post

H Block to 5 Yard Hitch

Y 5-8 Yard Hitch

RT Pass Block

LT Pass Block

RG Pass Block

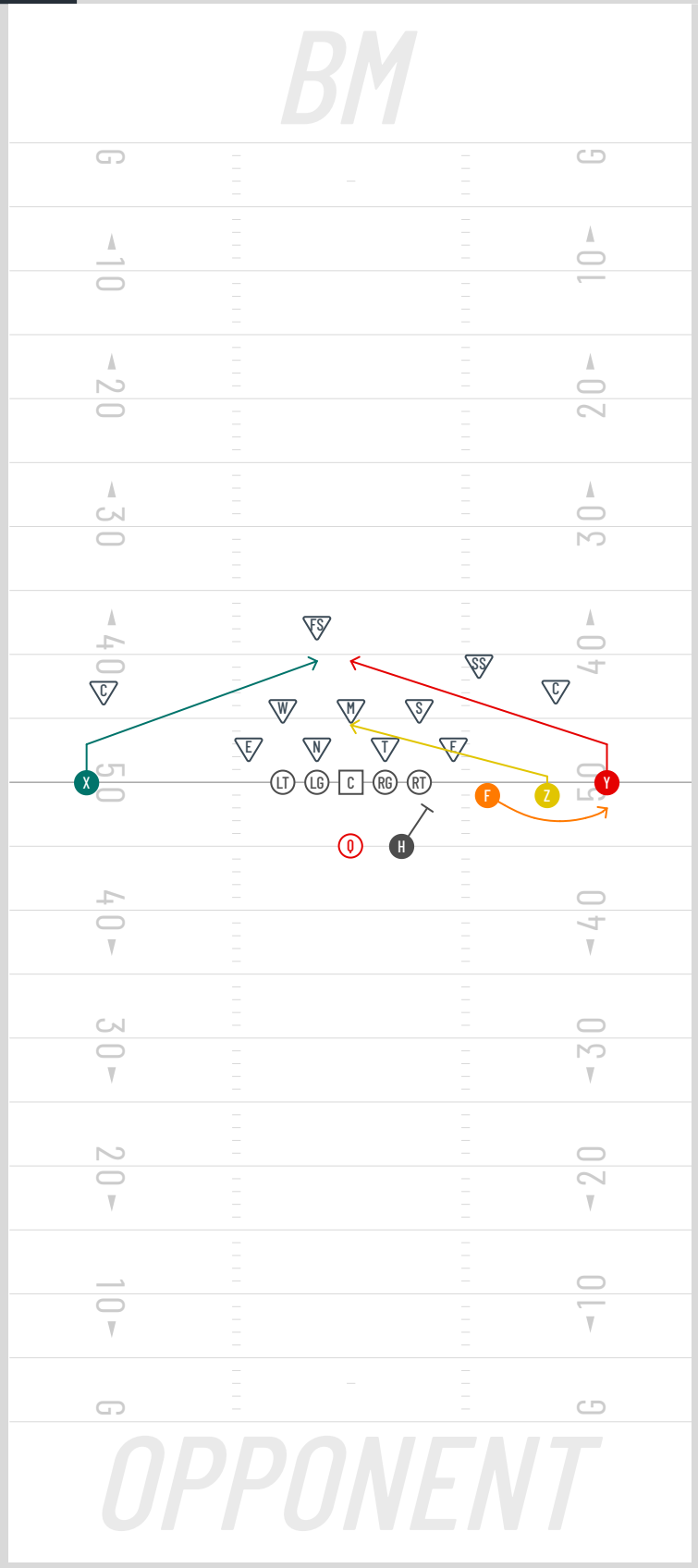
LG Pass Block

C Pass Block

OPPONENT

17 Trips Trips RT SNAKE

BM



Q Pass

X 3 Yards Slant

Z 1 Yard Slant

F Swing

H Block

Y 3 Yard Slant

RT Pass Block

LT Pass Block

RG Pass Block

LG Pass Block

C Pass Block